



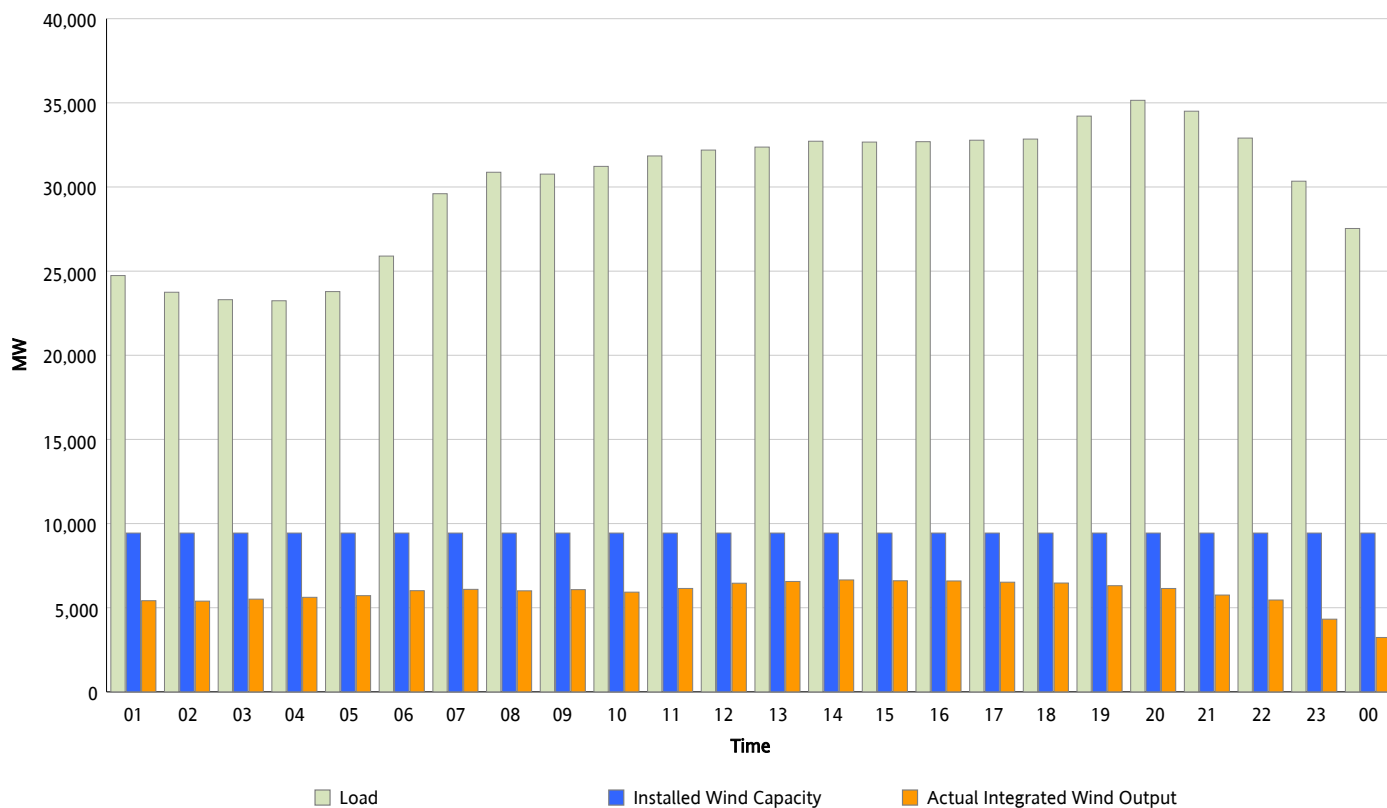
ERCOT Grid Operations

Wind Integration Report : 02/28/2012

Peak Load	35,150 MW
Load Peak Hour (HE)	20
Wind Over Peak	6,143 MW
Wind Record 10/07/11	7,400 MW
Max Wind Value*	6,725 MW
Wind Peak Time	13:40
Wind Integration %	20.5 %

Hourly Average Actual Load vs. Actual Wind Output

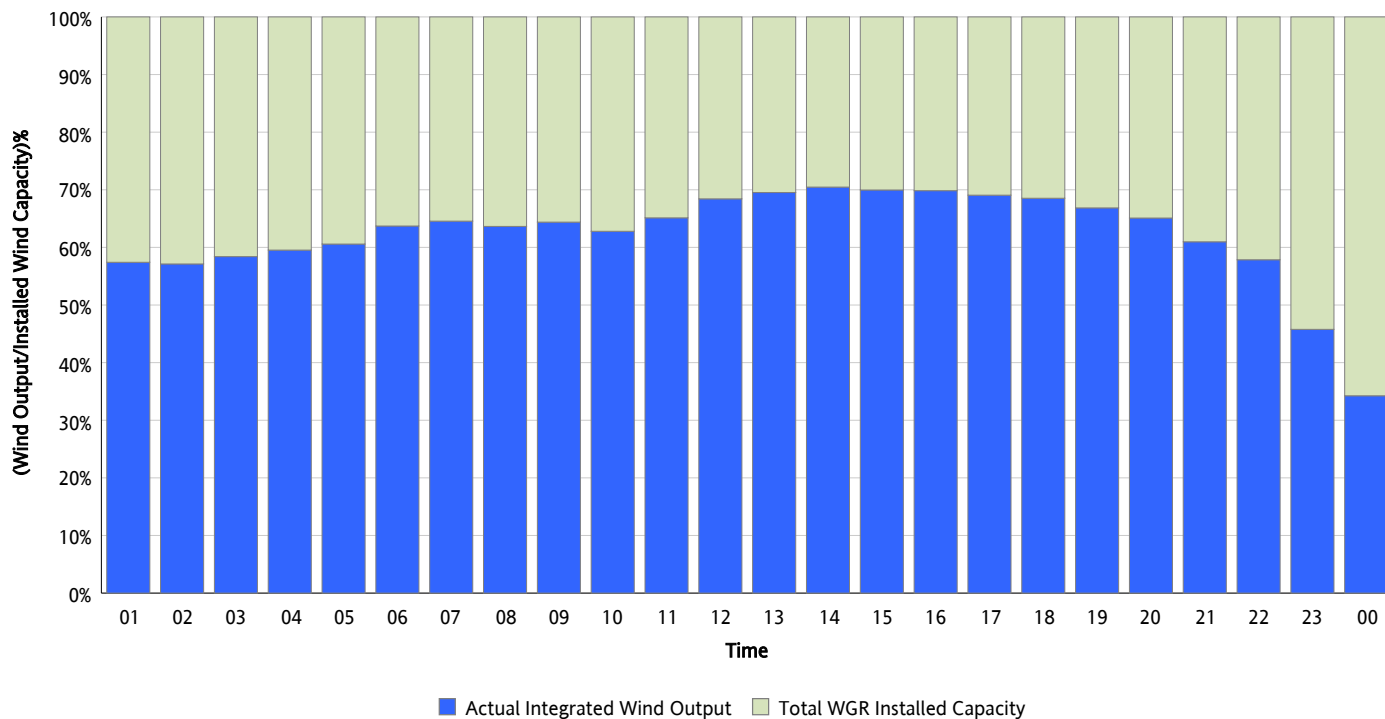
02/28/2012



* Wind Max represents the instantaneous value and the rest of the values are integrated over the hour

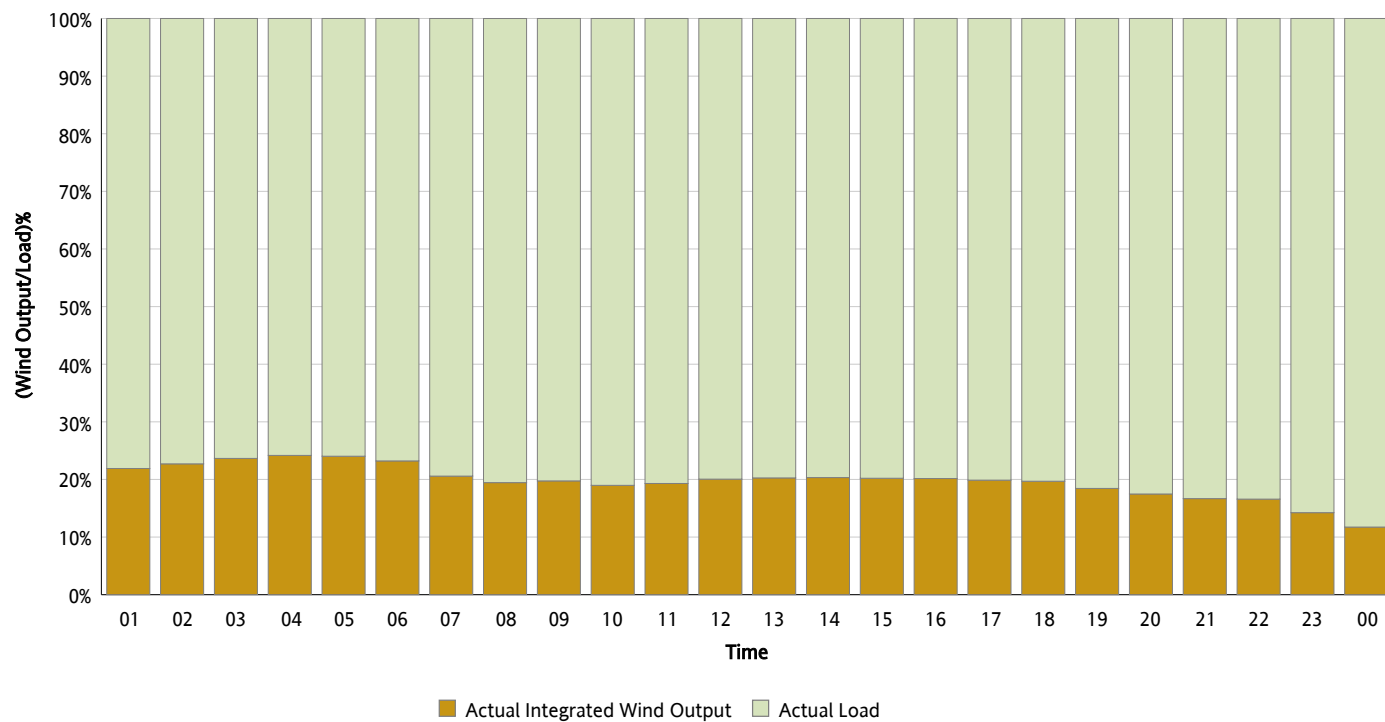
Actual Wind Output as a Percentage of the Total Installed Wind Capacity

02/28/2012



Actual Wind Output as a Percentage of the ERCOT Load

02/28/2012



ERCOT Load vs. Actual Wind Output

02/21/2012 - 02/28/2012

